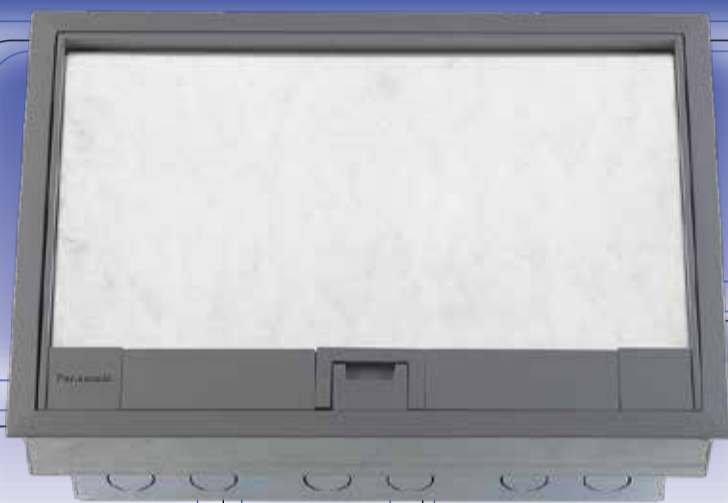


Panasonic

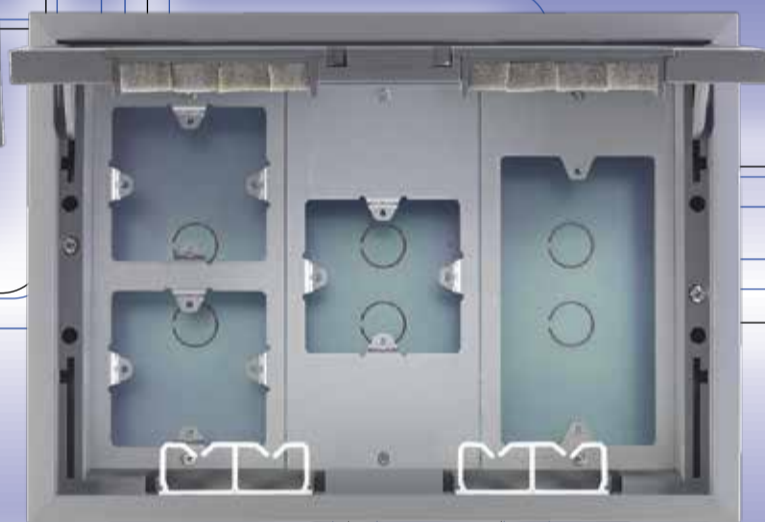
FLOOR BOX

3 Compartment Floor Box for concrete floor



DUMF6200LT-1

The three-compartment floor box for British Standard power and data outlets, flexible combination for various applications



◀ SIMPLE LID REVERSING

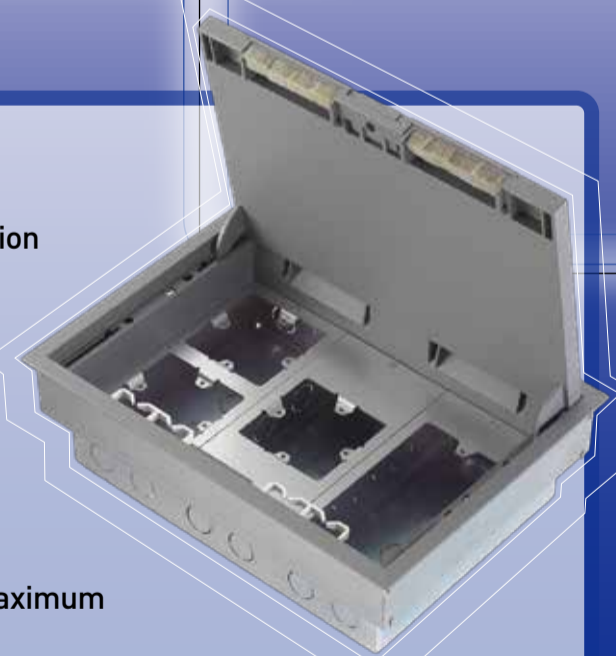
Quick and easy releasing lid by moving it to the unlock position

◀ OPTIONAL DEVICES DIRECTION

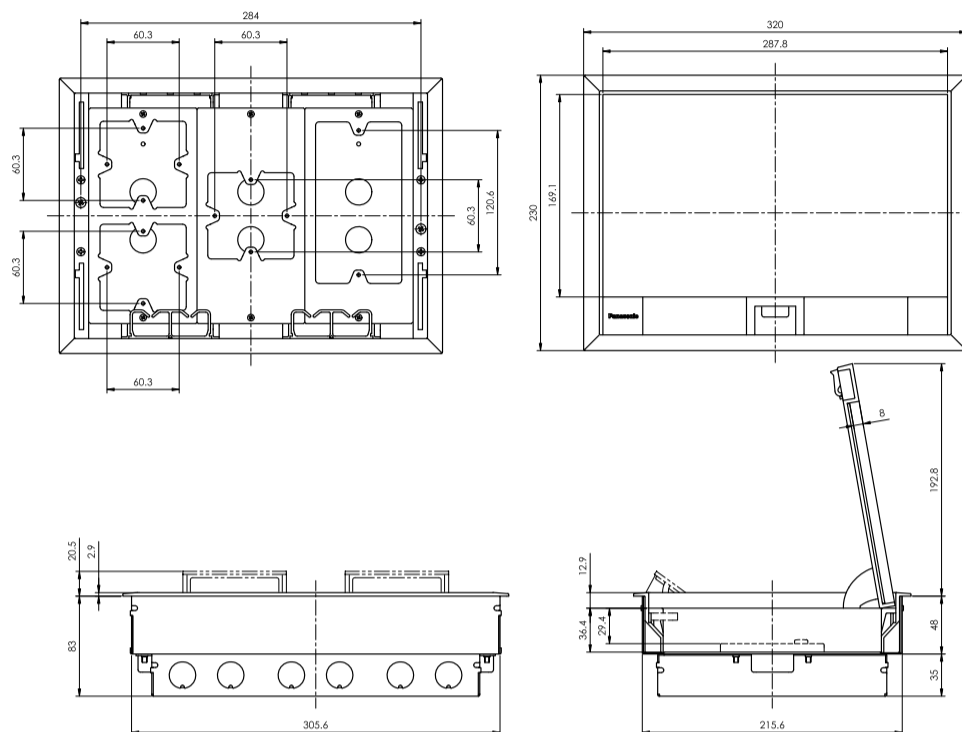
Power and Data devices can be adjusted to 4 directions (for single devices)

◀ 6 DEVICES MOUNTABLE

Multiple combination of Power and Data up to 6 modules maximum



Dimension

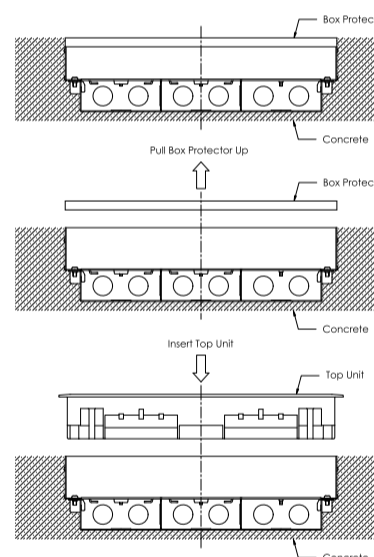


Installation

How To Mount

After putting the concrete on,
make the hole to install the product.

- (1) Take the box protector off
- (2) Insert the Floor Outlet Unit



Please contact...

Panasonic Marketing Middle East & Africa FZE
Eco Solutions Division

■ P.O Box 17985, Jebel Ali Free Zone (South), Dubai, U.A.E
■ Telephone : + 971-4-886 2142 ■ Facsimile : +971-4-880-7054

Panasonic Eco Solutions Steel (Thailand) Co., Ltd.

■ 51/4 Moo 2 Poochao Rd., Bangyaparak, Phrapradaeng, Samutprakarn,
Thailand 10130

■ Telephone: 0-2384-0038 ■ Facsimile: 0-2384-2752, 0-2384-2778

Panasonic Corporation Eco Solutions Company

Panasonic®

All Rights Reserved © 2018 COPYRIGHT Panasonic Eco Solutions Steel (Thailand) Co., Ltd.

■ FB12/18-01-2K-A

Specifications are subject to change without notice.