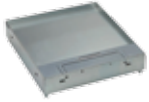


Raised Floor, Carpet, 3 Comp
264 X 264 X 86MM, Lid 8MM
Lid 689630 + Back Box 689638



Concrete Floor, Tile & Marble, 3 Comp
325 X 325 X 90MM, Lid 15MM
LID 689655 + Back Box 89604



Concrete Floor, Tile & Marble
3 comp, Stainless Steel
325 X 325 X 90MM, Lid 15MM
LID 689656 + Box 89604



Concrete Floor, Tile & Marble,
3 comp, Stainless Steel
325 X 325 X 90MM, Lid 22MM
LID 689652 + Box 89604

PLATES

689662
Blank Plate

689666
Plate with 13A Double Socket

689671
Flat Data Plate - 4 Module

689678
Waved Data Plate - 4 Module

689673
Plate for 4 Module

689658
Plate for 8 Module



Raised Or
Concrete 
220 x 220 x 65mm, 4 Modules
Brass / Aluminium



Raised Floor, Carpet, 20 Module
88126, Plastic Lid & Trim



Concrete Floor, 20 Module
88126+88089+88080,
Plastic Lid & Trim



Raised Floor, Carpet, 12 Module
88172
Plastic Lid & Trim



Raised Floor, Carpet, 3 Module
89644
Plastic Lid & Trim

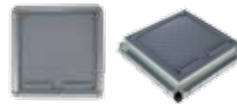


POP-UP BOXES FLOOR & FURNITURE

Single & Double
Color - Aluminium, Brass & SS
3,4,6,8 Modules




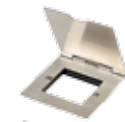
Raised Floor, Carpet
Size: 222 X 348 mm
ht: 70, 85, 100, 130 mm / Lid 8mm



Concrete Floor, Tile & Marble
125 X 125 X 56MM to
300 X 300 X 70MM
1,2 & 3 Compartment

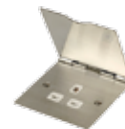
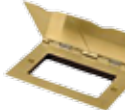


Raised &
Concrete 
140 X 140 X 50MM, 1 & 2Gang
Color: Aluminium



FLOOR SOCKETS

Flexible modules
Stainless Steel & Brass



13A Socket (1G & 2G)
Stainless Steel